



# Recovery in Finland/Kpedu

---

MILLA SULONEN, SCHOOL PSYCHOLOGIST

LAURA NIKKANEN, VOCATIONAL SPECIAL NEEDS TEACHER

# Content

---

- Recovery at our school environment
- Student Welfare Services Available at Kpedu
- Wide co-operation with Network
- Our co-operation with neuropsychiatric coaching







# Recovery at our school environment

---

- Students with different kind of issues with
  - mental health
  - neuropsychiatric symptoms
  - learning
  - substance abuse, etc.
    - Supportive services are included in the school services
- School culture
  - Defined by student welfare law
  - Communality, appreciative encounter, solution based approach



# Comprehensive & Communal Student Welfare

---

- Law of pupil and student welfare guides us not to work problem based but more preventive.
- Physical, psychological, social dimensions
- Multiprofessional co-operation
  - Individual meetings
  - Meetings with network
  - Lectures held by student welfare workers
- Developing the school environment suitable for all: Action for breaks, fair concerning well-being, etc.

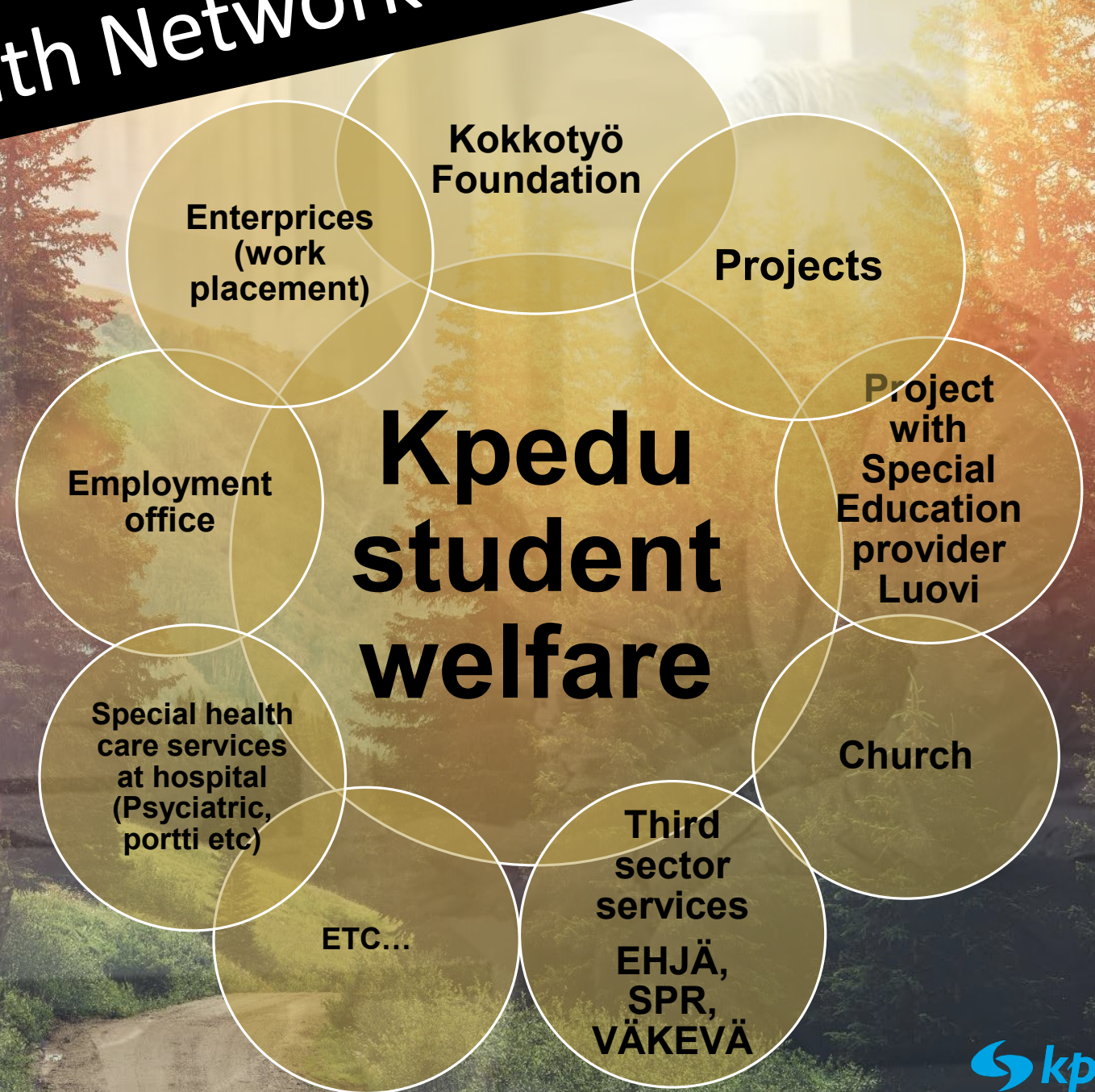


# Student Welfare Services Available at Kpedu

- Special needs education
  - School social work
  - School health service
    - Nurses
    - Psykkari: Nurse specialised with mental issues
    - Doctor
  - Psychologist
  - Etsivä- youth worker
  - Dormitory
- > Student welfare groups



# Wide Co-operation with Network







# Our co-operation with solution-oriented neuropsychiatric coaching

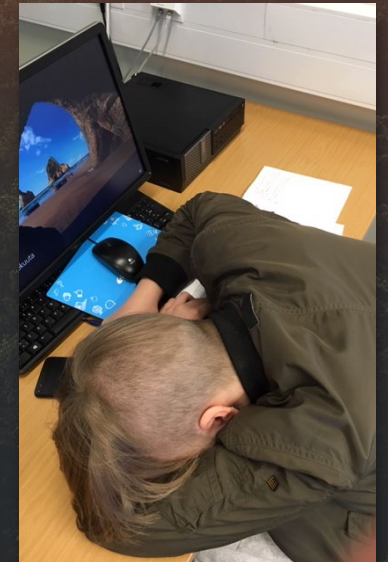
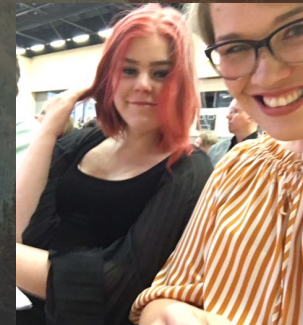
With whom?

Neuropsychiatric symptoms and executive functions

Why?

Willingness to prevent rather than fixing afterwards

- *Un-done studies, self-knowlegde, insecurity to perform*



# Working methods

## Providing knowledge for the staff

*Attention-deficit/hyperactivity disorder (AD/HD), Autism spectrum, Tic/Tourette's syndrome, sensory processing disorder, learning difficulties (especially language problems)*

## Providing knowledge for the students

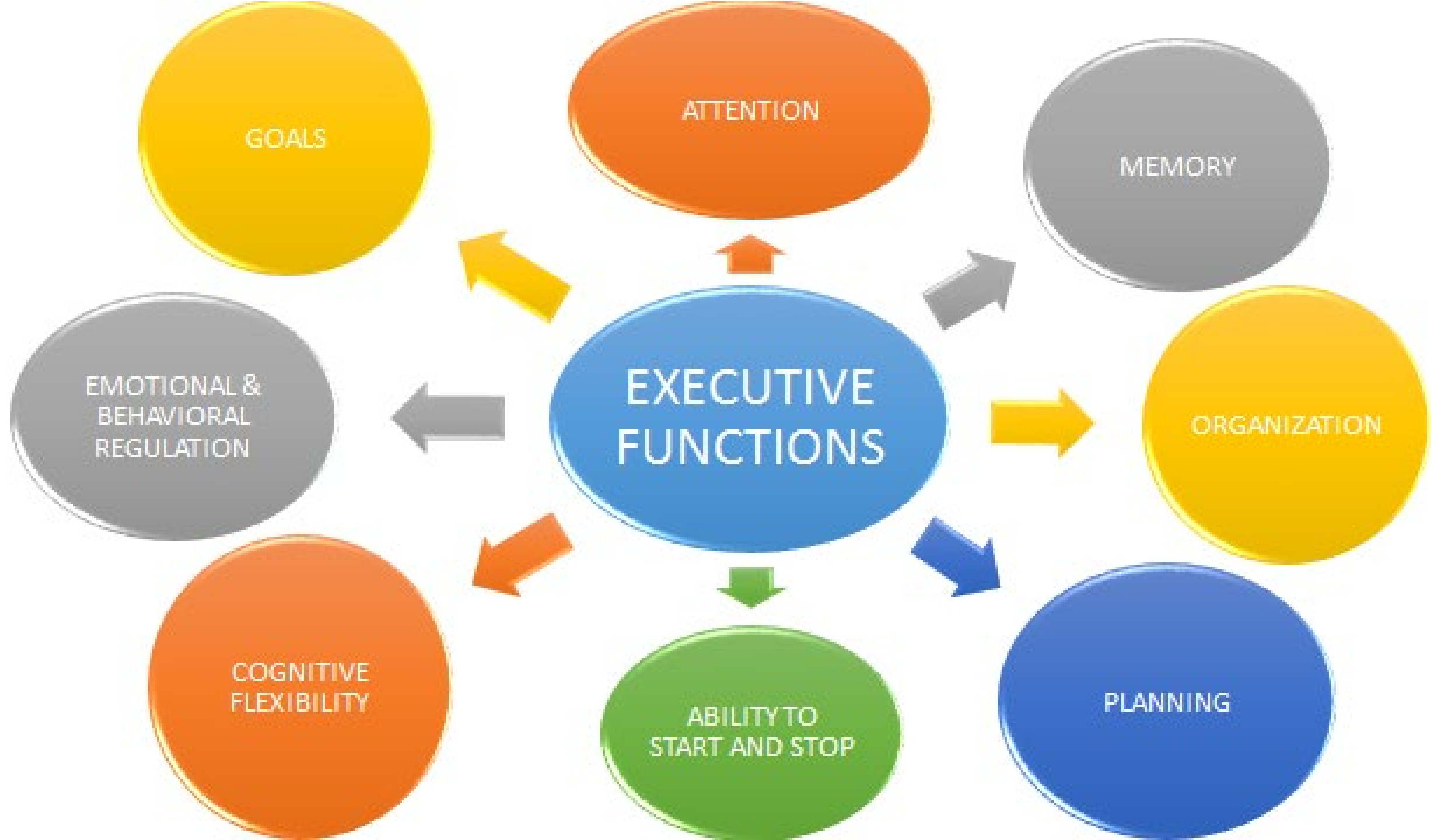
*Functional lectures*



## Working with individuals

*Practices in everyday life with students*





# Our aim

Self-understanding

Self-guidance

Awareness

Communication skills

Respective encounter

It's all about facing human being







**KIITOS – THANK YOU - DÍKY**